

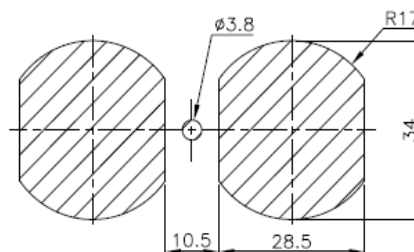
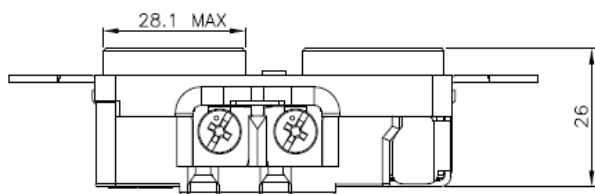
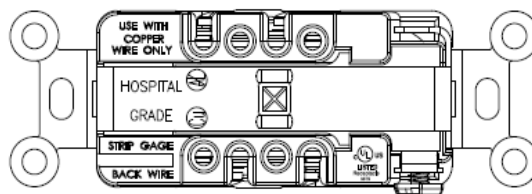
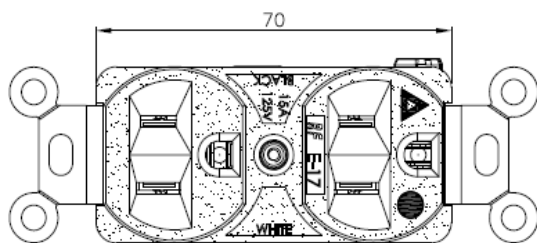
## 產品規格圖

### (STANDARD OF PRODUCTS)

產品類別(CATALOGUE):	美規插座(NEMA RECEPTACLE)
產品名稱(NAME):	E-17 Series
規格(STANDARD):	UL498 HOSPITAL GRADE (5-15R/6-15R)
材質(MATERIAL):	NY/PBT
電流(CURRENT RATING):	15A
電壓(VOLTAGE RATING):	(1)125V AC (2)250V AC
產品認證(APPROVALS):	UL/CUL



### 規 格 圖(SPECIFICATION)



Panel cut-out

Rong Feng®

榮 豐